



SURGICAL PRODUCT
CATALOGUE

SINGAPORE



CONTENTS

SURGICAL GOWNS

AERO CHROME*	page 4
AERO BLUE*	page 5
ULTRA*	page 6-7
SPECTRUM*	page 7
Standard	page 8

SURGICAL DRAPES & PACKS

Cardiac Catheterisation / Radiology Drapes	page 9-11
Cardiovascular Drapes & Packs	page 12-14
ENT Drapes & Packs	page 15-16
Equipment Covers	page 17
General Drapes & Packs:	
Accessories	page 18-19
Basic Packs	page 20
Basic Drapes	page 21-22
Fenestrated Drapes	page 23
Laparoscopy / Laparotomy Drapes & Packs	page 23-24
Minor Procedure Drapes	page 25
Universal Packs	page 26-27
Universal Drapes	page 28
Neuro / Spine Drapes	page 29
Obstetrics and Gynaecology Drapes & Packs:	
OB Packs	page 30
C-Section Drapes & Packs	page 31
Laparoscopy Packs	page 32
Lithotomy Packs	page 33
Lithotomy Drapes	page 34
Under Buttocks Drapes	page 35
Ophthalmic Drapes & Packs	page 36-37
Orthopaedic Drapes & Packs:	
Ortho Packs	page 38-40
Extremity Drapes	page 41-42
Hand Drapes	page 43
Hip Drapes	page 43
Knee Arthroscopy Drapes	page 44
Shoulder Drapes	page 45-46
U & Bar Drapes	page 47
Urology Drapes & Packs	page 48
Index	page 49

SURGICAL GOWNS



AERO CHROME* BREATHABLE HIGH PERFORMANCE SURGICAL GOWN

- AAMI Level 4 / EN 13795 High Performance
- High Performance Fluid and Microbial Barrier in a Lightweight and Breathable Fabric
- Unique Fitted V Neck Design Prevents Gaping While Leaning Forward
- Breathable Back Panel Maximizes Air Flow
- Highest Rating for Protection Against Ignition with Surgical Lasers
- Highly Resistant to Linting and Particulates
- Raglan Sleeves




Code	Description	Packaging
44688	Aero Chrome* Breathable High Performance Surgical Gown with Towels, S	Units/Case = 30
44689	Aero Chrome* Breathable High Performance Surgical Gown with Towels, L	Units/Case = 30
44690	Aero Chrome* Breathable High Performance Surgical Gown with Towels, XL	Units/Case = 28
44691	Aero Chrome* Breathable High Performance Surgical Gown with Towels, XXL	Units/Case = 28
44692	Aero Chrome* Breathable High Performance Surgical Gown with Towels, XXXL	Units/Case = 24
44693	Aero Chrome* Breathable High Performance Surgical Gown with Towels, L, X-Long	Units/Case = 30
44694	Aero Chrome* Breathable High Performance Surgical Gown with Towels, XL, X-Long	Units/Case = 30
44695	Aero Chrome* Breathable High Performance Surgical Gown with Towels, XXL, X-Long	Units/Case = 28



AERO CHROME* SELECT BREATHABLE PERFORMANCE GOWNS

- Performance Breathable Fabric
- Provides AAMI Level 4 Liquid Barrier Protection extending to back of gown
- Raglan Sleeves Design
- Adjustable Neckline with Soft, Comfortable, Knitted V-Neck White Collar
- Book Fold

Sterile Codes	Non-Sterile Codes	Size/Description	Sterile Items/Case	Non-Sterile Items/Case
44699	44696NS	Large	32	40
44706	44697NS	X-Large	30	32
44707	44698NS	XX-Large	28	32

-  Non-Reinforced Fabric
-  Fabric-Reinforced
-  High Performance

All codes in **bold** indicate a sterile product.
NOTE: Please see package inserts for directions for use for each of these products.



SURGICAL GOWNS



AERO BLUE* PERFORMANCE SURGICAL GOWN

- AAMI Level 3 / EN 13795 High Performance
- Breathable Back Panel
- High Level of Fluid Protection and Breathability as Measured by Mocan
- Raglan Sleeves
- Hook-and-Loop Adjustable Neckline

Code	Description	Packaging
41928	AERO BLUE* Performance Surgical Gown with Towels, L	Units/Case = 30
41929	AERO BLUE* Performance Surgical Gown with Towels, XL	Units/Case = 28
41930	AERO BLUE* Performance Surgical Gown with Towels, X-Long, L	Units/Case = 30
41931	AERO BLUE* Performance Surgical Gown with Towels, X-Long, XL	Units/Case = 30

-  Non-Reinforced Fabric
-  Fabric-Reinforced
-  High Performance

All codes in **bold** indicate a sterile product.
NOTE: Please see package inserts for directions for use for each of these products.

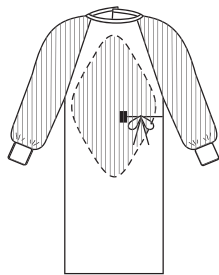
SURGICAL GOWNS



ULTRA* FILM-REINFORCED SPECIALTY SURGICAL GOWNS

- Low Linting Fabric
- A-line cut
- Raglan Sleeves
- Colour-Coded Neck Binding
- Adjustable Hook & Loop Neckline
- Book Fold
- Sterile Gown packaged with 1 Towel
- AAMI Level 4 / EN 13795 High Performance
- Specialty options for seated positions




Code	Description	Packaging
95511	ULTRA* Film-Reinforced Specialty Surgical Gown Sterile, Large	Units/Case = 30
95521	ULTRA* Film-Reinforced Specialty Surgical Gown Sterile, X-Large	Units/Case = 28



ULTRA* FABRIC-REINFORCED SURGICAL GOWNS

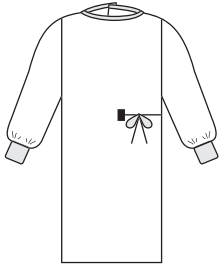
- Low Linting Fabric
- Raglan Sleeves
- Colour-Coded Neck Binding
- Adjustable Hook & Loop Neckline
- Book Fold
- Sterile Gown packaged with 1 Towel

Code	Description	Packaging
95201	ULTRA* Fabric-Reinforced Surgical Gown Sterile, Small	Units/Case = 30
95211	ULTRA* Fabric-Reinforced Surgical Gown Sterile, Large	Units/Case = 30
95221	ULTRA* Fabric-Reinforced Surgical Gown Sterile, X-Large	Units/Case = 28
95231	ULTRA* Fabric-Reinforced Surgical Gown Sterile, XX-Large	Units/Case = 28

-  Non-Reinforced Fabric
-  Fabric-Reinforced
-  High Performance

All codes in **bold** indicate a sterile product.
NOTE: Please see package inserts for directions for use for each of these products.

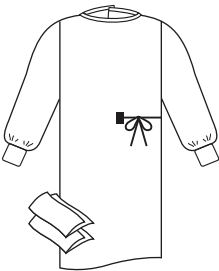
SURGICAL GOWNS



ULTRA* NON-REINFORCED SURGICAL GOWNS

- Low Linting Fabric
- Raglan Sleeves
- Colour-Coded Neck Binding
- Adjustable Hook & Loop Neckline
- Book Fold
- AAMI Level 3
- Sterile Gown packaged with 1 Towel



Code	Description	Packaging
95101	ULTRA* Non-Reinforced Surgical Gown Sterile, Small	Units/Case = 34
95111	ULTRA* Non-Reinforced Surgical Gown Sterile, Large	Units/Case = 32
74911	ULTRA* Non-Reinforced Surgical Gown Non-Sterile, Large	Units/Case = 32
95121	ULTRA* Non-Reinforced Surgical Gown Sterile, X-Large	Units/Case = 30



SPECTRUM* NON-REINFORCED SURGICAL GOWNS

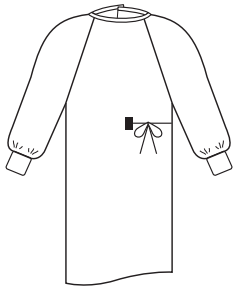
- AAMI Level 3 Performance
- SMS Fabric
- Set-In Sleeves
- Adjustable Hook & Loop Neckline
- Book Fold

Code	Description	Packaging
46924	SPECTRUM* Non-Reinforced Surgical Gown with Towels, Sterile, Medium	Units/Case = 32
46870	SPECTRUM* Non-Reinforced Surgical Gown, Non-Sterile, Medium	Units/Case = 32
46925	SPECTRUM* Non-Reinforced Surgical Gown with Towels, Sterile, Large	Units/Case = 28
46871	SPECTRUM* Non-Reinforced Surgical Gown, Non-Sterile, Large	Units/Case = 28
46926	SPECTRUM* Non-Reinforced Surgical Gown with Towels, Sterile, X-Large	Units/Case = 28
46872	SPECTRUM* Non-Reinforced Surgical Gown, Non-Sterile, X-Large	Units/Case = 28
47256	SPECTRUM* Non-Reinforced Surgical Gown with Towels, Sterile, XX-Large	Units/Case = 24
46873	SPECTRUM* Non-Reinforced Surgical Gown, Non-Sterile, XX-Large	Units/Case = 24

-  Non-Reinforced Fabric
-  Fabric-Reinforced
-  High Performance

All codes in **bold** indicate a sterile product.
NOTE: Please see package inserts for directions for use for each of these products.

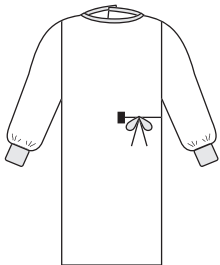
SURGICAL GOWNS



EVOLUTION* 4 STANDARD NON-REINFORCED SURGICAL GOWNS

- Low Linting Fabric
- Raglan Sleeves
- Colour-Coded Neck Binding
- Adjustable Hook & Loop Neckline
- Book Fold
- Sterile Gown packaged with 1 Towel



Code	Description	Packaging
90012	EVOLUTION* 4 Standard Non-Reinforced Surgical Gown, Book Fold Sterile, Large	Units/Case = 36
90042	EVOLUTION* 4 Standard Non-Reinforced Surgical Gown, Book Fold Sterile, X-Large	Units/Case = 34



STANDARD NON-REINFORCED SURGICAL GOWNS

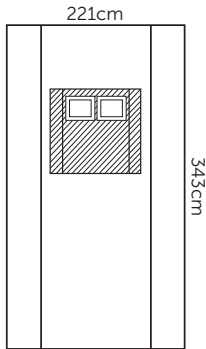
- Low Linting Fabric
- Set-In Sleeves
- Adjustable Hook & Loop Neckline
- Book Fold
- Sterile Gown packaged with 2 Towels

Code	Description	Packaging
78940	Surgical Gown with Set-In Sleeves, 2 Towels Sterile, Medium	Units/Case = 60
78945	Surgical Gown with Set-In Sleeves, 2 Towels Sterile, Large	Units/Case = 60
78950	Surgical Gown with Set-In Sleeves, 2 Towels Sterile, X-Large	Units/Case = 60
78955	Surgical Gown with Set-In Sleeves, 2 Towels Sterile, XX-Large	Units/Case = 60
72978	Non-Reinforced Surgical Gown, with Set-In Sleeves Non-Sterile, Handi-Bin, Large	Units/Case = 640
72988	Non-Reinforced Surgical Gown, with Set-In Sleeves Non-Sterile, Handi-Bin, X-Large	Units/Case = 640

-  Non-Reinforced Fabric
-  Fabric-Reinforced
-  High Performance

All codes in **bold** indicate a sterile product.
NOTE: Please see package inserts for directions for use for each of these products.

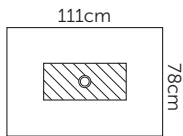
CARDIAC CATHETERISATION / RADIOLOGY DRAPES



PACEMAKER DRAPE, 221cm x 343cm

- Two Clear Side Windows 55cm x 343cm
- CONTROL* Plus Fabric Reinforcement
- Conformable Breather Bar 35cm
- Two Adhesive Fenestrations 15cm x 20cm
- Bilateral Pockets 15cm x 81cm

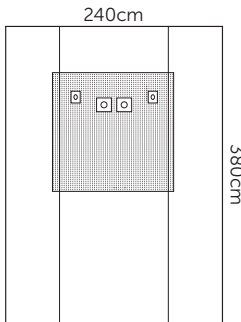
Code	Description	Packaging
89368	Pacemaker Drape, Sterile	Units/Case = 11
79368	Pacemaker Drape, Non-Sterile	Units/Case = 12



BRACHIAL ANGIOGRAPHY DRAPE, 111cm x 78cm

- CONTROL* Plus Fabric Reinforcement
- 7cm Adhesive Circular Fenestration

Code	Description	Packaging
89471	Brachial Angiography Drape, Sterile	Units/Case = 50



RADIAL FEMORAL ANGIOGRAPHY DRAPE, 240cm x 380cm

- Two 63cm x 350cm Windows
- Two 12cm x 7cm Oval Radial Fenestrations
- Two 12cm Round Femoral Fenestrations

Code	Description	Packaging
89583	HALYARD BASICS* Radial Femoral Angiography Drape, Sterile	Units/Case = 12

All codes in **bold** indicate a sterile product.

† Reinforcements include:

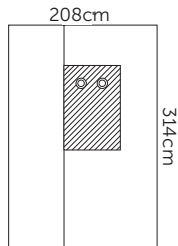
CONTROL* Plus – Maximum Absorbency

CONTROL* – Absorbent Reinforcement Fabric

Instrument Pad – Non-Slip Pad

NOTE: Please see package inserts for directions for use for each of these products.

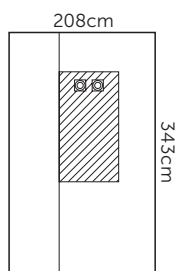
CARDIAC CATHETERISATION / RADIOLOGY DRAPES



FEMORAL ANGIOGRAPHY DRAPE WITH SINGLE WINDOW, 208cm x 314cm

- Two 12cm Diameter Fenestrations
- 68cm x 292cm Window
- CONTROL* Plus Fabric Reinforcement 81 cm x 122 cm
- Positioning Tape

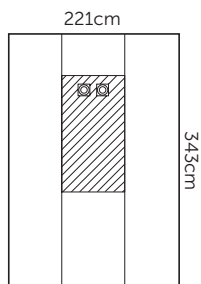
Code	Description	Packaging
89705	Femoral Angiography Drape with Window Sterile	Units/Case = 16
79705	Femoral Angiography Drape with Window Non-Sterile, Handi-Bin	Units/Case = 200



EXTRA LONG FEMORAL ANGIOGRAPHY DRAPE WITH WINDOW, 208cm x 343cm

- Two 9cm Adhesive Circular Fenestrations
- One 68cm x 315cm Windows
- CONTROL* Plus Fabric Reinforcement

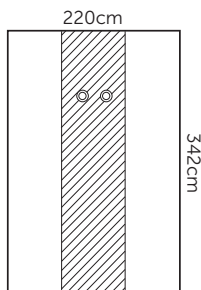
Code	Description	Packaging
89709	Extra Long Femoral Angiography Drape with Window, Sterile	Units/Case = 14
79709	Extra Long Femoral Angiography Drape with Window, Non-Sterile	Units/Case = 16



EXTRA LONG FEMORAL ANGIOGRAPHY DRAPE WITH WINDOWS, 221cm x 343cm

- Two 9cm Adhesive Circular Fenestrations
- Two 68cm x 343cm Windows
- CONTROL* Plus Fabric Reinforcement

Code	Description	Packaging
89711	Extra Long Femoral Angiography Drape with Dual Windows, Sterile	Units/Case = 16
13296	Extra Long Femoral Angiography Drape with Dual Windows, Non-Sterile	Units/Case = 180



EXTRA-LONG FEMORAL ANGIOGRAPHY DRAPE, 220cm x 342cm

- Extra-Long 220cm x 342cm Film Based Drape
- 81cm x 342cm Absorbent Fabric Reinforcement
- 78cm x 342cm Patient Comfort Layer
- Two 8cm Adhesive Circular Fenestrations
- Two 68cm x 342cm Clear Plastic Windows

Code	Description	Packaging
89749	Impervious Extra Long Femoral Angiography Drape Sterile	Units/Case = 16
79749	Extra-Long Femoral Angiography Drape Non-Sterile	Units/Case = 144

All codes in **bold** indicate a sterile product.

† Reinforcements include:

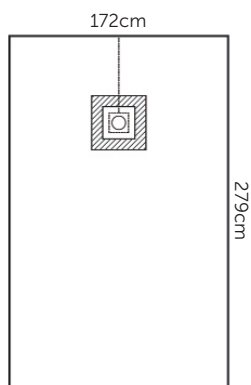
CONTROL* Plus – Maximum Absorbency

CONTROL* – Absorbent Reinforcement Fabric

Instrument Pad – Non-Slip Pad

NOTE: Please see package inserts for directions for use for each of these products.

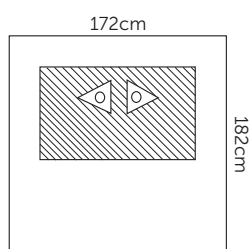
CARDIAC CATHETERISATION / RADIOLOGY DRAPES



CVC DRAPE WITH TOP PERFORATION 172cm x 279cm

- Perforation with SMS backing
- Incise
- 10cm fenestration
- Absorbent reinforcement

Code	Description	Packaging
31439	CVC Drape with Top Perforation, Sterile	Units/Case = 20
31455	CVC Drape with Top Perforation, Non-Sterile	Units/Case = 27



CENTRAL VENOUS CATHETER PATIENT COVER 172cm x 182cm

- Two - 7cm diameter circular fenestrations
- 24cm equilateral triangles with incise material

Code	Description	Packaging
89472	Central Venous Catheter Patient Cover, Sterile	Units/Case = 20
79472	Central Venous Catheter Patient Cover, Non-Sterile	Units/Case = 25

All codes in **bold** indicate a sterile product.

† Reinforcements include:

CONTROL* Plus – Maximum Absorbency

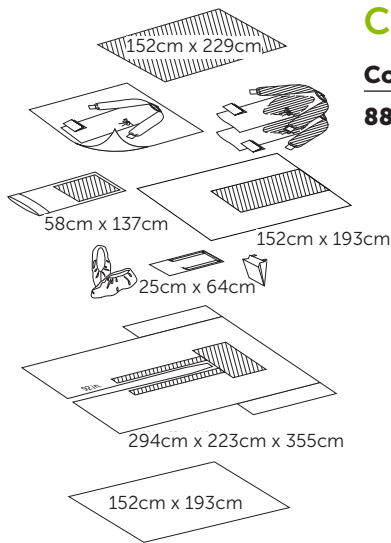
CONTROL* – Absorbent Reinforcement Fabric

Instrument Pad – Non-Slip Pad

NOTE: Please see package inserts for directions for use for each of these products.

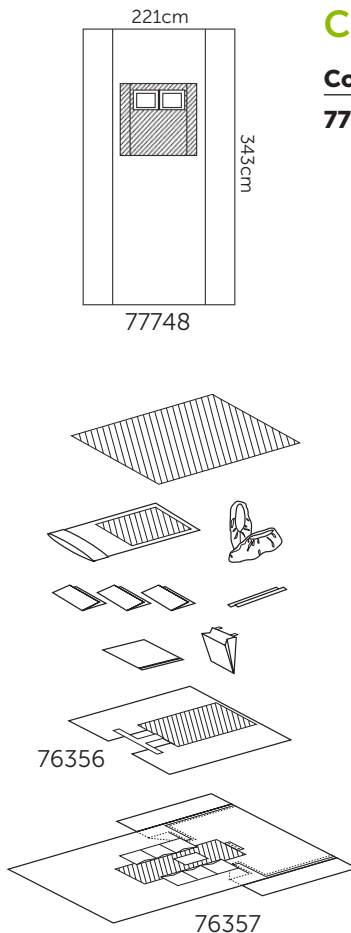
CARDIOVASCULAR DRAPES & PACKS

CARDIOVASCULAR PACK I



Code	Description	Packaging
88731	Cardiovascular Pack I	Items/Case = 2
Sterile Component Code	Non-Sterile Component Code	Contents
42224	42225NS 79648	1-Back Table Cover, 60in. X 90in. 1-CV Table Cover Skirt with Tape, 60in. X 76in.
89601	79607	1-Mayo Stand Cover, Reinforced, 23in. X 54in.
95111	39713NS	1-ULTRA Surgical Gown with Towel/Overwrap, Large
95211	79511	2-ULTRA Fabric-Reinforced Gowns with Towel, Large
89451	79451	1-Cardiovascular Split Drape, 116in. X 88in. X 140in.
89121	79120	1-Large Drape, 60in. X 76in. 1-Perineum Drape, 10in. X 25.5in. 2-Foot Covers 1-Suture Bag

CARDIOVASCULAR PACK II



Code	Description	Packaging
77748	Cardiovascular Pack II	Units/Case = 3
Sterile Component Code	Non-Sterile Component Code	Contents
89603	79603	1-Back Table Cover, Reinforced, 191cm x 201cm 1-Mayo Stand Cover, 80cm x 145cm 2-Foot Covers 3-Absorbent Towels, 37cm x 56cm
89053	76356	2-Tape Strips, 10cm x 55cm 1-Suture Bag 1-Utility Drape with Tape, 75cm x 75cm 1-Perineal Drape, 187cm x 241cm: 1-CV Incise Sheet, 264cm x 193cm x 363cm <ul style="list-style-type: none"> • Armboard Covers • Pouches • CONTROL* Plus Fabric Reinforcement • Tube Holders • 40cm x 50cm Adhesive Fenestration

All codes in **bold** indicate a sterile product.

† Reinforcements include:

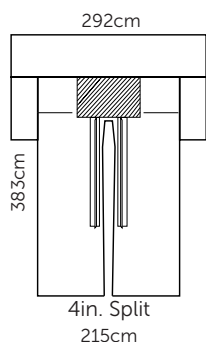
CONTROL* Plus – Maximum Absorbency

CONTROL* – Absorbent Reinforcement Fabric

Instrument Pad – Non-Slip Pad

NOTE: Please see package inserts for directions for use for each of these products.

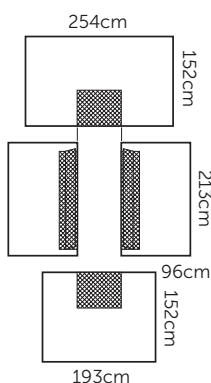
CARDIOVASCULAR DRAPES & PACKS



66350/77350

CVARTS* CLEARVIEW CARDIOVASCULAR PACK

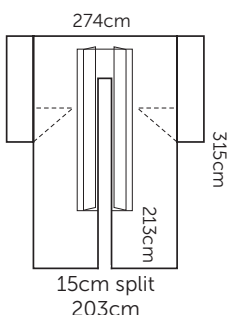
Code	Description	Packaging																														
66510	CVARTS* ClearView Cardiovascular Pack	Units/Case = 2																														
	<table border="1"> <thead> <tr> <th>Sterile Component Code</th> <th>Non-Sterile Component Code</th> <th>Contents</th> </tr> </thead> <tbody> <tr> <td>42309</td> <td>42310NS</td> <td>1-Back Table Cover, Heavy Duty, 70in. x 110in.</td> </tr> <tr> <td>89601</td> <td>79607</td> <td>1-Mayo Stand Cover, Reinforced, 23in. x 54in.</td> </tr> <tr> <td>95111</td> <td>39713NS</td> <td>1-ULTRA Surgical Gown with Towel/Overwrap, Large</td> </tr> <tr> <td>44674</td> <td>44665NS</td> <td>2-AERO CHROME* Surgical Gowns with Towel, XL</td> </tr> <tr> <td>89453</td> <td>79453</td> <td>1-CVARTS* Bilateral/Underleg Perineal Drape, 84in. x 80in.</td> </tr> <tr> <td>66350</td> <td>77350</td> <td>1-CVARTS* ClearView Split Drape, 115in. x 85in. x 151in.</td> </tr> <tr> <td>89121</td> <td>79120</td> <td>1-Large Drape, 60in. x 76in.</td> </tr> <tr> <td></td> <td>69253</td> <td>2-ANKLE GUARD* Shoe Covers, Universal</td> </tr> <tr> <td></td> <td></td> <td>1-Suture Bag</td> </tr> </tbody> </table>	Sterile Component Code	Non-Sterile Component Code	Contents	42309	42310NS	1-Back Table Cover, Heavy Duty, 70in. x 110in.	89601	79607	1-Mayo Stand Cover, Reinforced, 23in. x 54in.	95111	39713NS	1-ULTRA Surgical Gown with Towel/Overwrap, Large	44674	44665NS	2-AERO CHROME* Surgical Gowns with Towel, XL	89453	79453	1-CVARTS* Bilateral/Underleg Perineal Drape, 84in. x 80in.	66350	77350	1-CVARTS* ClearView Split Drape, 115in. x 85in. x 151in.	89121	79120	1-Large Drape, 60in. x 76in.		69253	2-ANKLE GUARD* Shoe Covers, Universal			1-Suture Bag	
Sterile Component Code	Non-Sterile Component Code	Contents																														
42309	42310NS	1-Back Table Cover, Heavy Duty, 70in. x 110in.																														
89601	79607	1-Mayo Stand Cover, Reinforced, 23in. x 54in.																														
95111	39713NS	1-ULTRA Surgical Gown with Towel/Overwrap, Large																														
44674	44665NS	2-AERO CHROME* Surgical Gowns with Towel, XL																														
89453	79453	1-CVARTS* Bilateral/Underleg Perineal Drape, 84in. x 80in.																														
66350	77350	1-CVARTS* ClearView Split Drape, 115in. x 85in. x 151in.																														
89121	79120	1-Large Drape, 60in. x 76in.																														
	69253	2-ANKLE GUARD* Shoe Covers, Universal																														
		1-Suture Bag																														



CVARTS* HEAVY-DUTY UNIVERSAL DRAPE SYSTEM

- Heavy-Duty Fabric
- CONTROL* Plus Fabric Reinforcement

Code	Description	Packaging
89454	CVARTS* Heavy-Duty Universal Drape System, Sterile	Units/Case = 5
	<p>Contents:</p> <ul style="list-style-type: none"> 1-CVARTS* Top Drape, 254cm x 152cm 1-CVARTS* Bottom Drape, 193cm x 152cm 2-CVARTS* Side Drapes, 96cm x 213cm, Longitudinal Flaps with Hook and Loop 	



CVARTS* HEAVY-DUTY CV SPLIT DRAPE, 274cm x 203cm x 315cm

- Armboard Covers
- 15cm x 213cm Split
- Longitudinal Flaps with Hook and Loop
- Heavy-Duty Fabric
- CONTROL* Plus Fabric Reinforcement

Code	Description	Packaging
89452	CVARTS* Heavy-Duty CV Split Drape, Sterile	Units/Case = 6
79452	CVARTS* Heavy-Duty CV Split Drape, Non-Sterile	Units/Case = 7

All codes in **bold** indicate a sterile product.

† Reinforcements include:

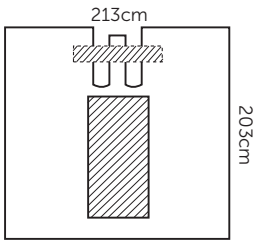
CONTROL* Plus – Maximum Absorbency

CONTROL* – Absorbent Reinforcement Fabric

Instrument Pad – Non-Slip Pad

NOTE: Please see package inserts for directions for use for each of these products.

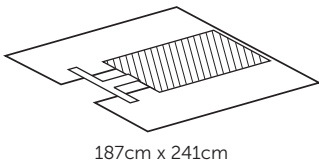
CARDIOVASCULAR DRAPES & PACKS



CVARTS* BILATERAL UNDERLEG / PERINEAL DRAPE, 213cm x 203cm

- Perineal Cover
- Umbilicus Cover
- CONTROL* Plus Fabric Reinforcement

Code	Description	Packaging
89453	CVARTS* Bilateral Underleg / Perineal Drape, Sterile	Units/Case = 14
79453	CVARTS* Bilateral Underleg / Perineal Drape, Non-Sterile	Units/Case = 18



PERINEAL DRAPE, 187cm x 241cm

- Split 44cm x 95cm
- CONTROL* Plus Fabric Reinforcement
- Positioning Tape

Code	Description	Packaging
76356	Perineal Drape, Non-Sterile	Units/Case = 17

All codes in **bold** indicate a sterile product.

† Reinforcements include:

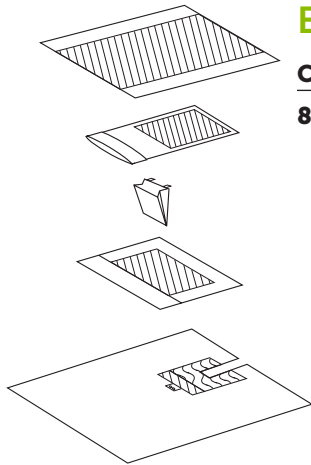
CONTROL* Plus – Maximum Absorbency

CONTROL* – Absorbent Reinforcement Fabric

Instrument Pad – Non-Slip Pad

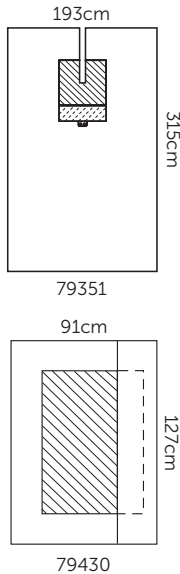
NOTE: Please see package inserts for directions for use for each of these products.

ENT DRAPES & PACKS



ENT PACK III

Code	Description	Non-Sterile Component Code	Contents	Packaging
88223	ENT Pack III			Units/Case = 6
89603		79603	1-Back Table Cover, Zone-Reinforced, 152cm x 191cm 1-Mayo Stand Cover 80cm x 145cm 1-Suture Bag	
89431		79430	1-Head Drape 91cm x 127cm:	
			<ul style="list-style-type: none"> • Turban • Positioning Tape 	
89352		79351	1-ENT Split Drape 193cm x 315cm:	
			<ul style="list-style-type: none"> • with 7 x 71cm Split • Positioning Tape • CONTROL* Fabric Reinforcement • Tube Holders 	



EENT PACK II

Code	Description	Non-Sterile Component Code	Contents	Packaging
88716	EENT Pack II			Units/Case = 5
89618		79498	1-Back Table Cover, Zone-Reinforced, 112cm x 228cm	
95111		71311	1-ULTRA Surgical Gown In Overwrap, with Towel, Large	
95111		71311	1-ULTRA Surgical Gown with Towel, Large	
			1-Microsurgery Mayo Stand Cover	
			1-Suture Bag	
89431		79430	1-Head Drape, 127cm x 91cm	
89352		79351	1-EENT Split Drape with CONTROL* Reinforcement, 193cm x 315cm with 7cm x 71cm Split	

All codes in **bold** indicate a sterile product.

† Reinforcements include:

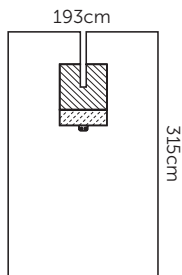
CONTROL* Plus – Maximum Absorbency

CONTROL* – Absorbent Reinforcement Fabric

Instrument Pad – Non-Slip Pad

NOTE: Please see package inserts for directions for use for each of these products.

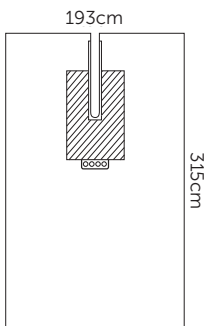
ENT DRAPES & PACKS



EENT SPLIT DRAPE, 193cm x 315cm

- CONTROL* Fabric Reinforcement
- 7cm x 71cm Split
- Tube Holders
- Instrument Pad

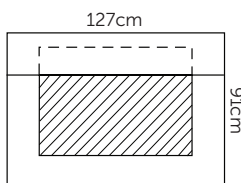
Code	Description	Packaging
89352	EENT Split Drape, Sterile	Units/Case = 18
79351	EENT Split Drape, Non-Sterile	Units/Case = 25



EENT Split Drape, 193cm x 315cm

- CONTROL* Plus Fabric Reinforcement
- 8cm x 64cm Split
- Tube Holders
- Instrument Pad

Code	Description	Packaging
89358	EENT Split Drape, Sterile	Units/Case = 10



HEAD DRAPE, 127cm x 91cm

- Turban, 83cm x 50cm

Code	Description	Packaging
89431	Head Drape, Sterile	Units/Case = 38
79430	Head Drape, Non-Sterile	Units/Case = 60

All codes in **bold** indicate a sterile product.

† Reinforcements include:

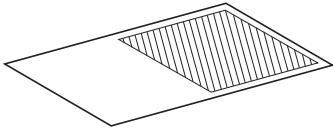
CONTROL* Plus – Maximum Absorbency

CONTROL* – Absorbent Reinforcement Fabric

Instrument Pad – Non-Slip Pad

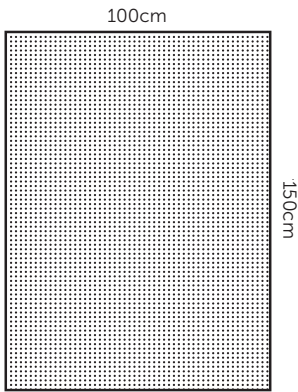
NOTE: Please see package inserts for directions for use for each of these products.

EQUIPMENT COVERS



MAYO STAND COVERS

Code	Description	Packaging
89601	Mayo Stand Cover, Reinforced, 58cm x 137cm, Sterile	Units/Case = 54
79607	Mayo Stand Cover, Reinforced, 58cm x 137cm, Non-Sterile	Units/Case = 1200
89602	Mayo Stand Cover, Reinforced, X-Large, 76cm x 145cm, Sterile	Units/Case = 44
79602	Mayo Stand Cover, Reinforced, X-Large, 76cm x 145cm, Non-Sterile	Units/Case = 120
76358	Mayo Stand Cover, Padded, X-Large, 76cm x 145cm, Non-Sterile	Units/Case = 68
89603	Mayo Stand Cover, Reinforced, XX-Large, 80cm x 145cm, Sterile	Units/Case = 44
79603	Mayo Stand Cover, Reinforced, XX-Large, 80cm x 145cm, Non-Sterile	Units/Case = 120



BACK TABLE COVERS

Code	Description	Packaging
79482	Back Table Cover, 115cm x 152cm, Non-Sterile, Standard Fold	Units/Case = 90
42217	Back Table Cover, Standard, 112cm x 229cm, Sterile	Units/Case = 28
42218	Back Table Cover, Standard, 112cm x 229cm, Non-Sterile, Unfolded	Units/Case = 640
42231	Back Table Cover, Standard, 112cm x 229cm, Non-Sterile, Fan Fold	Units/Case = 400
42480	Standard Back Table Cover, 152 cm x 152 cm, Non-Sterile, Handi-Bin	Units/Case = 720
77592	Back Table Cover, Sterile, 150 cm X 180 cm	Units/Case = 45
42306	Back Table Cover, Heavy Duty, 152cm x 229cm, Sterile	Units/Case = 28
42307	Back Table Cover, Heavy Duty, 152cm x 229cm, Non-Sterile, Unfolded	Units/Case = 400
42366	Back Table Cover, Heavy Duty, 152cm x 229cm, Non-Sterile, Fan Fold	Units/Case = 200

All codes in **bold** indicate a sterile product.

† Reinforcements include:

CONTROL* Plus – Maximum Absorbency

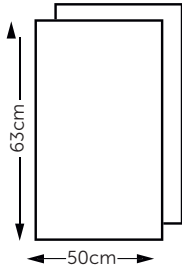
CONTROL* – Absorbent Reinforcement Fabric

Instrument Pad – Non-Slip Pad

NOTE: Please see package inserts for directions for use for each of these products.

GENERAL DRAPES & PACKS

ACCESSORIES



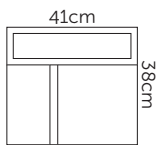
DISPOSABLE HUCK TOWELS, 50cm x 63cm

Code	Description	Packaging
89021	Disposable Huck Towel, Sterile, Pack of 2	Units/Case = 142
79725	Disposable Huck Towel, Non-Sterile	Units/Case = 300



TAPE STRIPS, 10cm x 55cm

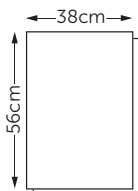
Code	Description	Packaging
89053	Tape Strips, Sterile, Pack of 2	Units/Case = 300
79053	Tape Strips, Non-Sterile	Units/Case = 1000



DIATHERMY POUCH, 38cm x 41cm

- Adhesive Backing Strip

Code	Description	Packaging
89945	Diathermy Pouch, Sterile	Units/Case = 150
79945	Diathermy Pouch, Non-Sterile	Units/Case = 220



ABSORBENT TOWEL, 38cm x 56cm

Code	Description	Packaging
89701	Absorbent Towel, Sterile	Units/Case = 200
79720	Absorbent Towel, Non-Sterile	Units/Case = 1000

All codes in **bold** indicate a sterile product.

† Reinforcements include:

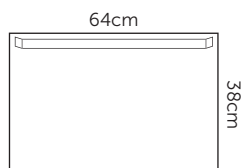
CONTROL* Plus – Maximum Absorbency

CONTROL* – Absorbent Reinforcement Fabric

Instrument Pad – Non-Slip Pad

NOTE: Please see package inserts for directions for use for each of these products.

GENERAL DRAPES & PACKS



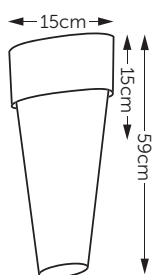
UTILITY DRAPE WITH TAPE, 38cm x 64cm

Code Description

79731 Utility Drape with Tape, Non-Sterile

Packaging

Units/Case = 550



SLEEVE, 15cm X 59cm

Code Description

89791 Sleeve, Sterile

Packaging

Units/Case = 100

All codes in **bold** indicate a sterile product.

† Reinforcements include:

CONTROL* Plus – Maximum Absorbency

CONTROL* – Absorbent Reinforcement Fabric

Instrument Pad – Non-Slip Pad

NOTE: Please see package inserts for directions for use for each of these products.

GENERAL DRAPES & PACKS

BASIC PACKS

BASIC PACK I

Code	Description	Packaging									
88111	Basic Pack I	Units/Case = 24									
	<table border="1"> <thead> <tr> <th>Sterile Component Code</th> <th>Non-Sterile Component Code</th> <th>Contents</th> </tr> </thead> <tbody> <tr> <td>42217</td> <td></td> <td>1-Back Table Cover, Zone-Reinforced, 112cm x 228cm</td> </tr> <tr> <td>89601</td> <td>79601</td> <td>1-Mayo Stand Cover, Reinforced, 58cm x 137cm 1-Suture Bag</td> </tr> </tbody> </table>	Sterile Component Code	Non-Sterile Component Code	Contents	42217		1-Back Table Cover, Zone-Reinforced, 112cm x 228cm	89601	79601	1-Mayo Stand Cover, Reinforced, 58cm x 137cm 1-Suture Bag	
Sterile Component Code	Non-Sterile Component Code	Contents									
42217		1-Back Table Cover, Zone-Reinforced, 112cm x 228cm									
89601	79601	1-Mayo Stand Cover, Reinforced, 58cm x 137cm 1-Suture Bag									

BASIC PACK II

Code	Description	Packaging												
88121	Basic Pack II	Units/Case = 15												
	<table border="1"> <thead> <tr> <th>Sterile Component Code</th> <th>Non-Sterile Component Code</th> <th>Contents</th> </tr> </thead> <tbody> <tr> <td>42217</td> <td></td> <td>1-Back Table Cover, Zone-Reinforced, 112cm x 228cm</td> </tr> <tr> <td>89601</td> <td>79601</td> <td>1-Mayo Stand Cover, Reinforced, 58cm x 137cm</td> </tr> <tr> <td>89701</td> <td>79720</td> <td>1-Absorbent Towel, 38cm x 56cm 1-Suture Bag</td> </tr> </tbody> </table>	Sterile Component Code	Non-Sterile Component Code	Contents	42217		1-Back Table Cover, Zone-Reinforced, 112cm x 228cm	89601	79601	1-Mayo Stand Cover, Reinforced, 58cm x 137cm	89701	79720	1-Absorbent Towel, 38cm x 56cm 1-Suture Bag	
Sterile Component Code	Non-Sterile Component Code	Contents												
42217		1-Back Table Cover, Zone-Reinforced, 112cm x 228cm												
89601	79601	1-Mayo Stand Cover, Reinforced, 58cm x 137cm												
89701	79720	1-Absorbent Towel, 38cm x 56cm 1-Suture Bag												

All codes in **bold** indicate a sterile product.

† Reinforcements include:

CONTROL* Plus – Maximum Absorbency

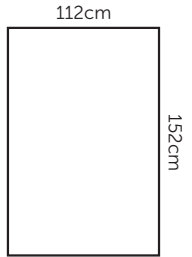
CONTROL* – Absorbent Reinforcement Fabric

Instrument Pad – Non-Slip Pad

NOTE: Please see package inserts for directions for use for each of these products.

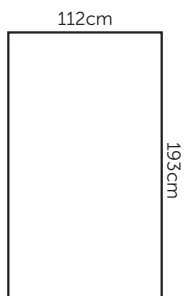
GENERAL DRAPES & PACKS

BASIC DRAPES



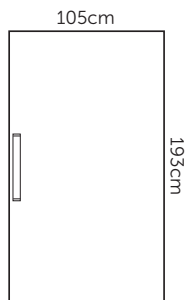
HALF DRAPE, 152cm x 112cm

Code	Description	Packaging
89101	Half Drape, Sterile	Units/Case = 54
79106	Half Drape, Non-Sterile	Units/Case = 1000



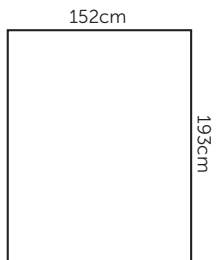
MEDIUM DRAPE, 193cm x 112cm

Code	Description	Packaging
89111	Medium Drape, Sterile	Units/Case = 50
79112	Medium Drape, Non-Sterile	Units/Case = 800



MEDIUM DRAPE WITH TAPE, 193cm x 105cm

Code	Description	Packaging
89023	Medium Drape with Tape, Sterile	Units/Case = 50



LARGE DRAPE, 152cm x 193cm

Code	Description	Packaging
89121	Large Drape, Sterile	Units/Case = 36
79122	Large Drape, Non-Sterile	Units/Case = 48

All codes in **bold** indicate a sterile product.

† Reinforcements include:

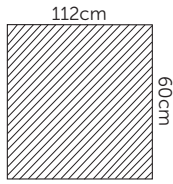
CONTROL* Plus – Maximum Absorbency

CONTROL* – Absorbent Reinforcement Fabric

Instrument Pad – Non-Slip Pad

NOTE: Please see package inserts for directions for use for each of these products.

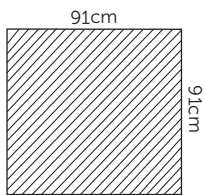
GENERAL DRAPES & PACKS



SMALL ABSORBENT DRAPE WITH TAPE, 57cm x 60cm

- CONTROL* Plus Absorbent Fabric

Code	Description	Packaging
79828	Small Absorbent Drape with Tape, Non-Sterile	Units/Case = 108



STANDARD ABSORBENT DRAPE WITH TAPE, 91cm x 91cm

- CONTROL* Plus Absorbent Fabric

Code	Description	Packaging
79343	Standard Absorbent Drape with Tape, Non-Sterile	Units/Case = 70

All codes in **bold** indicate a sterile product.

† Reinforcements include:

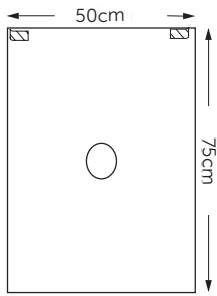
CONTROL* Plus – Maximum Absorbency

CONTROL* – Absorbent Reinforcement Fabric

Instrument Pad – Non-Slip Pad

NOTE: Please see package inserts for directions for use for each of these products.

GENERAL DRAPES & PACKS

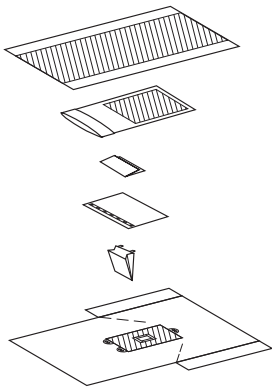


FENESTRATED DRAPES

EPIDURAL DRAPE WITH TAPE, 50cm x 75cm

- 8cm x 10cm Oval Fenestration, Centred
- Spunbond Film
- Positioning Tape

Code	Description	Packaging
89636	HALYARD BASICS* Epidural Drape with Tape, Sterile	Units/Case = 40



LAPAROTOMY PACKS

LAPAROTOMY PACK III

Code	Description	Packaging
88231	Laparotomy Pack III, Sterile	Units/Case = 15

Sterile Component Code	Non-Sterile Component Code	Contents
42217		1-Back Table Cover, Zone-Reinforced, 112cm x 228cm
89601	79601	1-Mayo Stand Cover, Reinforced, 58cm x 137cm
89701	79720	1-Absorbent Towel, 38cm x 56cm
89221	79220	1-Laparotomy Drape, 264cm x 193cm
		1-Suture Bag

All codes in **bold** indicate a sterile product.

† Reinforcements include:

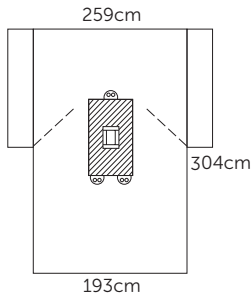
CONTROL* Plus – Maximum Absorbency

CONTROL* – Absorbent Reinforcement Fabric

Instrument Pad – Non-Slip Pad

NOTE: Please see package inserts for directions for use for each of these products.

GENERAL DRAPES & PACKS



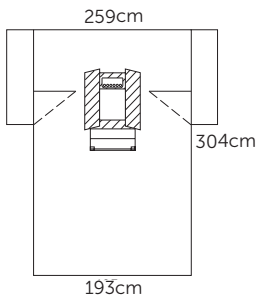
LAPAROSCOPY / LAPAROTOMY DRAPES

LAPAROTOMY DRAPE, 259cm x 193cm x 304cm

- One 10cm x 30cm Rectangular Fenestration
- Tube holders
- CONTROL* Plus Fabric Reinforcement
- Armboard Covers

Code	Description	Packaging
------	-------------	-----------

89221	Laparotomy Drape, Sterile	Units/Case = 15
--------------	---------------------------	-----------------

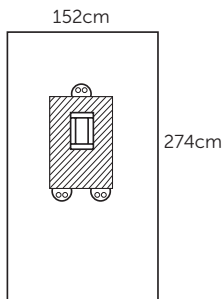


LAPAROSCOPIC/CHOLECYSTECTOMY DRAPE WITH INSTRUMENT POUCH 259cm x 193cm x 304cm

- 30cm x 33cm Abdominal Fenestration
- CONTROL* Plus Fabric Reinforcement
- Instrument Pouch
- Line Control Flaps
- Tube Holders
- Armboard Covers

Code	Description	Packaging
------	-------------	-----------

89223	Laparoscopic/Cholecystectomy Drape with Instrument Pouch, Sterile	Units/Case = 10
--------------	---	-----------------



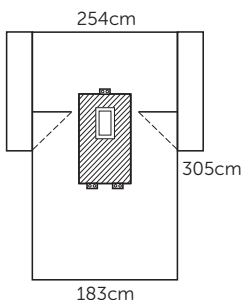
PAEDIATRIC LAPAROTOMY DRAPE, 152cm x 274cm

- 7cm x 20cm Fenestration
- CONTROL* Plus Fabric Reinforcement
- Tube Holders

Code	Description	Packaging
------	-------------	-----------

89241	Paediatric Laparotomy Drape, Sterile	Units/Case = 15
--------------	--------------------------------------	-----------------

79240	Paediatric Laparotomy Drape, Non-Sterile	Units/Case = 25
-------	--	-----------------



LAPAROTOMY DRAPE WITH INCISE, 254cm x 183cm x 305cm

- 20cm x 33cm Adhesive Incise Area
- CONTROL* Plus Fabric Reinforcement
- Tube Holders
- Armboard Covers

Code	Description	Packaging
------	-------------	-----------

89282	Laparotomy Drape with Incise, Sterile	Units/Case = 15
--------------	---------------------------------------	-----------------

79282	Laparotomy Drape with Incise, Non-Sterile	Units/Case = 15
-------	---	-----------------

All codes in **bold** indicate a sterile product.

† Reinforcements include:

CONTROL* Plus – Maximum Absorbency

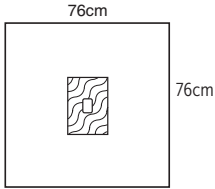
CONTROL* – Absorbent Reinforcement Fabric

Instrument Pad – Non-Slip Pad

NOTE: Please see package inserts for directions for use for each of these products.

GENERAL DRAPES & PACKS

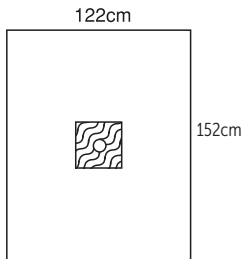
MINOR PROCEDURE DRAPES



MINOR PROCEDURE FENESTRATED DRAPE, 76cm x 76cm

- 4cm x 5cm Fenestration
- CONTROL* Fabric Reinforcement
- Positioning Tape

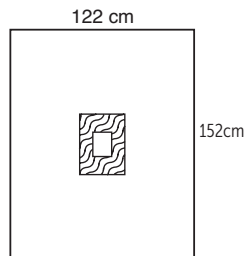
Code	Description	Packaging
89206	Minor Procedure Fenestrated Drape, Sterile	Units/Case = 100
79206	Minor Procedure Fenestrated Drape, Non-Sterile	Units/Case = 250



MINOR PROCEDURE FENESTRATED DRAPE, 122cm x 152cm

- 7cm Diameter Fenestration
- CONTROL* Fabric Reinforcement
- Positioning Tape

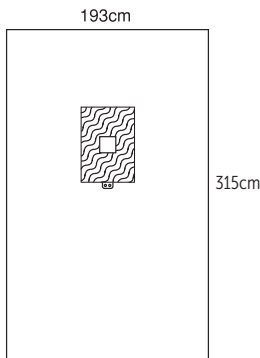
Code	Description	Packaging
89207	Minor Procedure Fenestrated Drape, Sterile	Units/Case = 40
79207	Minor Procedure Fenestrated Drape, Non-Sterile	Units/Case = 60



MINOR PROCEDURE FENESTRATED DRAPE, 122cm x 152cm

- 12cm x 15cm Fenestration
- CONTROL* Fabric Reinforcement
- Positioning Tape

Code	Description	Packaging
89208	Minor Procedure Fenestrated Drape, Sterile	Units/Case = 40
79208	Minor Procedure Fenestrated Drape, Non-Sterile	Units/Case = 60



MINOR PROCEDURE FENESTRATED DRAPE, 193cm x 315cm

- 15cm x 15cm Fenestration
- CONTROL* Fabric Reinforcement
- Positioning Tape

Code	Description	Packaging
89209	Minor Procedure Fenestrated Drape, Sterile	Units/Case = 19
79209	Minor Procedure Fenestrated Drape, Non-Sterile	Units/Case = 23

All codes in **bold** indicate a sterile product.

† Reinforcements include:

CONTROL* Plus – Maximum Absorbency

CONTROL* – Absorbent Reinforcement Fabric

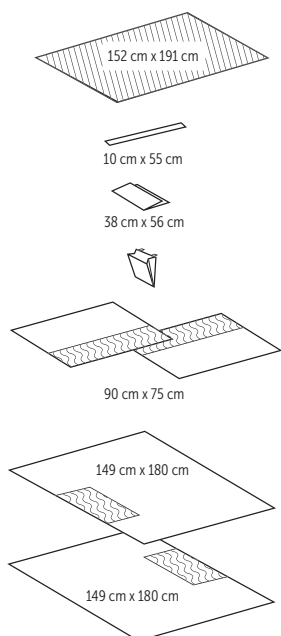
Instrument Pad – Non-Slip Pad

NOTE: Please see package inserts for directions for use for each of these products.

GENERAL DRAPES & PACKS

UNIVERSAL PACKS

UNIVERSAL PACK, SMALL, EXCL. MAYO STAND COVER



Code	Description	Packaging
88763	Universal Pack, Small, excl. Mayo Stand Cover	Units/Case = 11
Sterile Component Code	Non-Sterile Component Code	Contents
42222	42428	1-Back Table Cover, Reinforced, 152cm x 191cm 1-Tape Strip 10 x 55 cm 1-Absorbent Towel 38 x 56 cm 2-Side Drapes 90 x 75 cm
	79214	1-Bottom Drape 149 x 180 cm
	79215	1-Top Drape 149 x 180 cm 1-Suture Bag

All codes in **bold** indicate a sterile product.

† Reinforcements include:

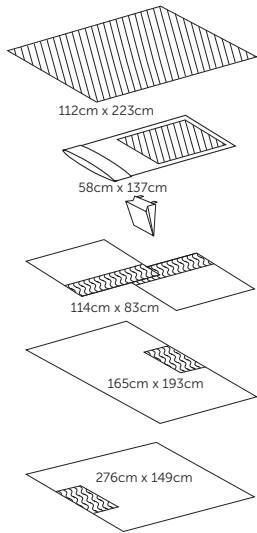
CONTROL* Plus – Maximum Absorbency

CONTROL* – Absorbent Reinforcement Fabric

Instrument Pad – Non-Slip Pad

NOTE: Please see package inserts for directions for use for each of these products.

GENERAL DRAPES & PACKS

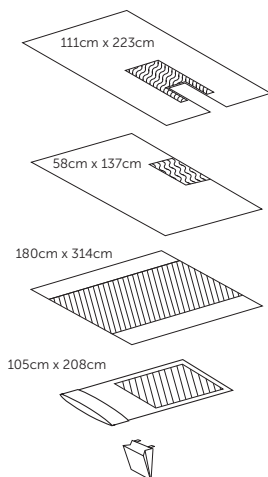


UNIVERSAL PACK – MINOR WITH SHORT SIDE DRAPES

Code	Description	Packaging
88769	Universal Pack – Minor	Units/Case = 14
Sterile Component Code	Non-Sterile Component Code	Contents
89611	79613	1-Back Table Cover, Fully-Reinforced, 112cm x 223cm
89601	79601	1-Mayo Stand Cover, Reinforced, 58cm x 137cm
		1-Suture Bag
	79097	2-Side Drapes with CONTROL* Reinforcement, 114cm x 83cm
	79096	1-Bottom Drape with CONTROL* Reinforcement, 165cm x 193cm
	79095	1-Top Drape with CONTROL* Reinforcement, 276cm x 149cm

UNIVERSAL PACK V

Code	Description	Packaging
88770	Universal Pack V	Units/Case = 10
Sterile Component Code	Non-Sterile Component Code	Contents
		1-Back Table Cover, Reinforced, 149 cm x 180 cm
		2-Hand Towels
		1-Mayo Stand Cover, 58 cm x 137 cm
		1-Suture Bag
		1-Side Drapes, 99 cm x 144 cm
		1-Bottom Drape, 193 cm x 193 cm
		1-Top Drape, 276 cm x 149 cm



U-BAR* PACK

Code	Description	Packaging
88334	U-BAR* Pack	Units/Case = 16
Sterile Component Code	Non-Sterile Component Code	Contents
89601	79601	1-Back Table Cover, Zone Reinforced, 111cm x 223cm
		1-Mayo Stand Cover, Reinforced, 58cm x 137cm
		1-Suture Bag
		1-U-Drape with CONTROL* Reinforcement, 180cm x 314cm, with 10cm x 102cm Split
		1-Bar Drape with CONTROL* Reinforcement, 105cm x 208cm

All codes in **bold** indicate a sterile product.

† Reinforcements include:

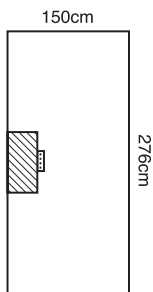
CONTROL* Plus – Maximum Absorbency

CONTROL* – Absorbent Reinforcement Fabric

Instrument Pad – Non-Slip Pad

NOTE: Please see package inserts for directions for use for each of these products.

GENERAL DRAPES & PACKS



TOP DRAPE, 276cm x 150cm

- CONTROL* Fabric Reinforcement
- Tube Holders
- Positioning Tape
- From Universal Pack 88769

Code	Description	Packaging
79095	Top Drape, Non-Sterile	Units/Case = 60

All codes in **bold** indicate a sterile product.

† Reinforcements include:

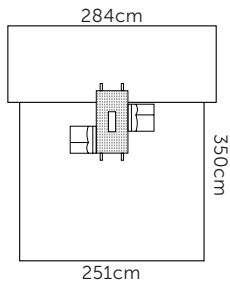
CONTROL* Plus – Maximum Absorbency

CONTROL* – Absorbent Reinforcement Fabric

Instrument Pad – Non-Slip Pad

NOTE: Please see package inserts for directions for use for each of these products.

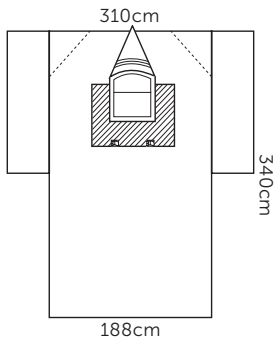
NEURO / SPINE DRAPES



HALYARD BASICS* UNIVERSAL SPINE DRAPE, 284cm x 251cm x 350cm

- 10cm x 30cm Fenestration
- Armboard Covers

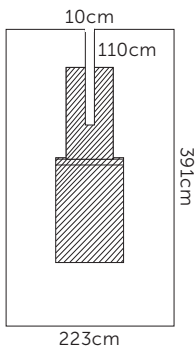
Code	Description	Packaging
89193	HALYARD BASICS* Universal Spine Drape, Sterile	Units/Case = 24
79593	HALYARD BASICS* Universal Spine Drape, Non-Sterile	Units/Case = 24



CRANIOTOMY DRAPE WITH POUCH, 310cm x 188cm x 340cm

- CONTROL* Plus Fabric Reinforcement
- 20cm x 30cm Oval Fenestration
- Clear Gusseted Anesthesia Panels
- Screen and Suction Port

Code	Description	Packaging
89062	Craniotomy Drape with Pouch, Sterile	Units/Case = 9
79075	Craniotomy Drape with Pouch, Non-Sterile	Units/Case = 15



NEURO SPLIT DRAPE, 223cm x 391cm

- CONTROL* Plus Fabric Reinforcement
- 10cm x 101cm split
- Built-in overhead table cover
- Clipping/retractor tab

Code	Description	Packaging
89501	Neuro Split Drape, Sterile	Units/Case = 7
79501	Neuro Split Drape, Non-Sterile	Units/Case = 11

All codes in **bold** indicate a sterile product.

† Reinforcements include:

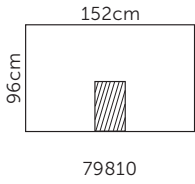
CONTROL* Plus – Maximum Absorbency

CONTROL* – Absorbent Reinforcement Fabric

Instrument Pad – Non-Slip Pad

NOTE: Please see package inserts for directions for use for each of these products.

OBSTETRICS & GYNAECOLOGY DRAPES & PACKS



OB PACKS

OB PACK III

Code	Description	Packaging
88831	OB Pack III	Units/Case = 5
Sterile Component Code	Non-Sterile Component Code	Contents
42217	42218NS	1-Back Table Cover, 44in. x 90in.
44673	44663NS	1-AERO CHROME* Gown with Towel, Large
	79412	1-Under Buttocks Drape, Plastic, 29.5in. x 44in.
	79810	1-Abdominal Drape with Tape, 60in. x 38in.
89111	79112	1-Medium Drape Set up Cover, 76in. x 44in.
89408	79027	2-Leggings, 31in. x 48in.
89701	79720	2-Absorbent Towels, 15in. x 22in.
		1-Davol® Bulb Syringe - 2oz.
		1-Hollister® Cord Clamp
		2-Peri Pads
		10-Sponges, X-Ray Detectable, 4in. x 4in.
		1-Vaginal Packing Sponge
		1-Baby Blanket
		1-Placenta Basin with Lid

All codes in **bold** indicate a sterile product.

† Reinforcements include:

CONTROL* Plus – Maximum Absorbency

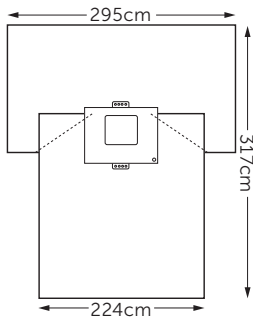
CONTROL* – Absorbent Reinforcement Fabric

Instrument Pad – Non-Slip Pad

NOTE: Please see package inserts for directions for use for each of these products.

OBSTETRICS & GYNAECOLOGY DRAPES & PACKS

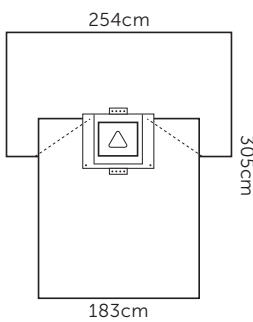
C-SECTION DRAPES



CESAREAN/ABDOMINAL FLUID COLLECTION DRAPE, 295cm x 224cm x 317cm

- 38cm x 33cm Adhesive Incise Area
- 360° Fluid Collection Pouch, Foam Band with Suction Port
- Tube Holders
- Armboard Covers

Code	Description	Packaging
89525	Cesarean/Abdominal Fluid Collection Drape, Sterile	Units/Case = 7
79525	Cesarean/Abdominal Fluid Collection Drape, Non-Sterile	Units/Case = 14



C-SECTION DRAPE WITH FENESTRATED INCISE, 254cm x 183cm x 305cm

- 38cm x 33cm Adhesive Incise Area with Triangular Fenestration
- 270° Fluid Collection Pouch, Malleable Band, with Suction Port
- Tube Holders
- Armboard Covers

Code	Description	Packaging
89528	C-Section Drape with Fenestrated Incise, Sterile	Units/Case = 8
79528	C-Section Drape with Fenestrated Incise, Non-Sterile	Units/Case = 150

All codes in **bold** indicate a sterile product.

† Reinforcements include:

CONTROL* Plus – Maximum Absorbency

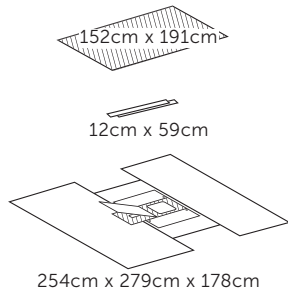
CONTROL* – Absorbent Reinforcement Fabric

Instrument Pad – Non-Slip Pad

NOTE: Please see package inserts for directions for use for each of these products.

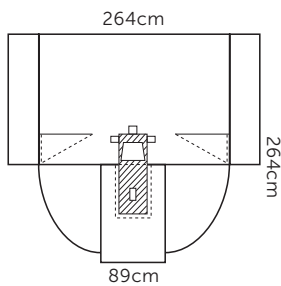
OBSTETRICS & GYNAECOLOGY DRAPES & PACKS

LAPAROSCOPY PACKS



UNIVERSAL LAPAROSCOPY PELVISCOPY PACK

Code	Description	Packaging
76263	Universal Laparoscopy Pelviscopy Pack	Units/Case = 8
Sterile Component Code	Non-Sterile Component Code	Contents
42222	42428 76377	1-Back Table Cover, Reinforced, 152 cm x 191 cm 1-Laparoscopy Drape with Attached Leggings, 254cm x 279cm x 178 cm 2-Tape Strips 12 x 59 cm



LAPAROSCOPY / PELVISCOPY PACK

Code	Description	Packaging
88222	Laparoscopy/Pelviscopy Pack	Units/Case = 6
Sterile Component Code	Non-Sterile Component Code	Contents
89618	79498	1-Back Table Cover, Zone-Reinforced, 112cm x 228cm
95111	71311	1-ULTRA Surgical Gown, In Overwrap, with Towel, Large
95111	71311	1-ULTRA Surgical Gown, with Towel, Large
89601	79601	1-Mayo Stand Cover, Reinforced, 58cm x 137cm 1-Suture Bag
89413		1-Under Buttocks Drape, Plastic-Reinforced, Large 101cm x 116cm
89408	79408	2-Leggings, with 15cm Cuff, Sterile Pair, 78cm x 122cm 1-Laparoscopy / Pelviscopy Drape with CONTROL* Plus Reinforcement (without Leggings), 264cm x 89cm x 264cm <ul style="list-style-type: none"> • 18cm x 23cm Trapezoidal Abdominal Fenestration • 8cm x 15cm Perineal Fenestration with Flap

All codes in **bold** indicate a sterile product.

† Reinforcements include:

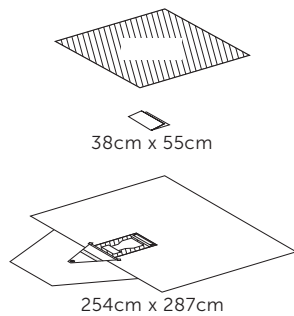
CONTROL* Plus – Maximum Absorbency

CONTROL* – Absorbent Reinforcement Fabric

Instrument Pad – Non-Slip Pad

NOTE: Please see package inserts for directions for use for each of these products.

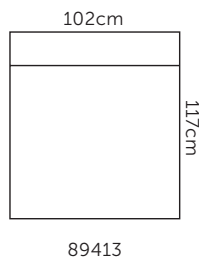
OBSTETRICS & GYNAECOLOGY DRAPES & PACKS



LITHOTOMY PACKS

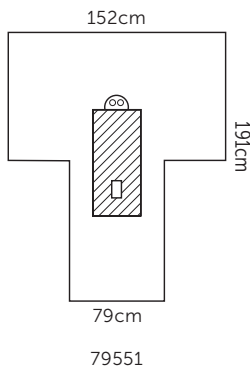
GYNAECOLOGY/UROLOGY PACK I

Code	Description	Packaging
77888	Gynaecology/Urology Pack I	Units/Case = 12
Sterile Component Code	Non-Sterile Component Code	Contents
42222	42428	1-Back Table Cover, Reinforced 152 cm x 190 cm
89701	79720	1-Absorbent Towel 38 cm x 55 cm
	76888	1-Gynaecology/Urology Drape 254 cm x 287 cm



LITHOTOMY PACK II

Code	Description	Packaging
88521	Lithotomy Pack II	Units/Case = 10
Sterile Component Code	Non-Sterile Component Code	Contents
89618	79498	1-Back Table Cover, Zone-Reinforced, 112cm x 229cm
		1-Absorbent Towel, 38cm x 56cm
89413	79413	1-Under Buttocks Drape, Plastic-Reinforced, 102cm x 117cm
89408	79408	2-Leggings with 15cm Cuff, 79cm x 122cm
89101	79101	1-Half Drape, 152cm x 112cm



LITHOTOMY PACK V

Code	Description	Packaging
88551	Lithotomy Pack V	Units/Case = 12
Sterile Component Code	Non-Sterile Component Code	Contents
89618	79498	1-Back Table Cover, Zone-Reinforced, 112cm x 229cm
89701	79720	1-Absorbent Towel, 38cm x 56cm
89408	79408	2-Leggings, with 15cm Cuffs
	79551	1-Lithotomy "T" Drape with CONTROL* Plus Reinforcement, 152cm x 79cm x 191cm with 8cm x 15cm Perineal Fenestration

All codes in **bold** indicate a sterile product.

† Reinforcements include:

CONTROL* Plus – Maximum Absorbency

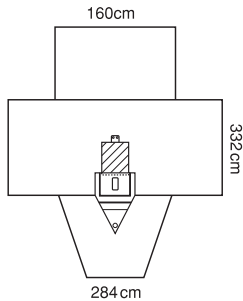
CONTROL* – Absorbent Reinforcement Fabric

Instrument Pad – Non-Slip Pad

NOTE: Please see package inserts for directions for use for each of these products.

OBSTETRICS & GYNAECOLOGY DRAPES & PACKS

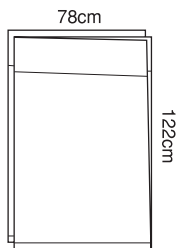
LITHOTOMY DRAPES



GYN / UROLOGY DRAPE WITH POUCH, 160cm x 284cm x 332cm

- Pouch with Mesh Screen and Port
- Attached Leggings
- CONTROL* Plus Fabric Reinforcement
- 7cm x 15cm Perineal Fenestration
- Tube Holders
- Armboard Covers

Code	Description	Packaging
89204	Gyn/Urology Drape with Pouch, Sterile	Units/Case = 10
79204	Gyn/Urology Drape with Pouch, Non-Sterile	Units/Case = 10



LEGGINGS, 78cm x 122cm, WITH 15cm CUFF

Code	Description	Packaging
89408	Leggings, Sterile Pair	Units/Case = 26
79408	Leggings, Non-Sterile	Units/Case = 70

All codes in **bold** indicate a sterile product.

† Reinforcements include:

CONTROL* Plus – Maximum Absorbency

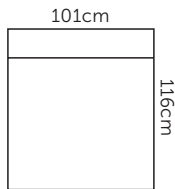
CONTROL* – Absorbent Reinforcement Fabric

Instrument Pad – Non-Slip Pad

NOTE: Please see package inserts for directions for use for each of these products.

OBSTETRICS & GYNAECOLOGY DRAPES & PACKS

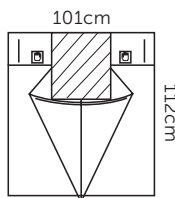
UNDER BUTTOCKS DRAPES



UNDER BUTTOCKS DRAPE, PLASTIC REINFORCED, LARGE, 101cm x 116cm

Code	Description	Packaging
------	-------------	-----------

89413	Under Buttocks Drape, Plastic Reinforced, Large, Sterile	Units/Case = 50
--------------	--	-----------------



UNDER BUTTOCKS DRAPE WITH FLUID COLLECTION POUCH, 101cm x 112cm

- CONTROL* Plus Absorbent Pad

Code	Description	Packaging
------	-------------	-----------

89414	Under Buttocks Drape, with Fluid Collection Pouch, Sterile	Units/Case = 30
--------------	--	-----------------

79414	Under Buttocks Drape, with Fluid Collection Pouch, Non-Sterile	Units/Case = 80
-------	--	-----------------

All codes in **bold** indicate a sterile product.

† Reinforcements include:

CONTROL* Plus – Maximum Absorbency

CONTROL* – Absorbent Reinforcement Fabric

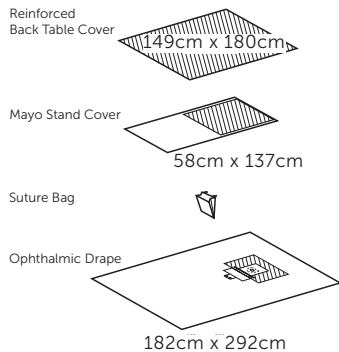
Instrument Pad – Non-Slip Pad

NOTE: Please see package inserts for directions for use for each of these products.

OPHTHALMIC DRAPES & PACKS

OPHTHALMIC PACKS

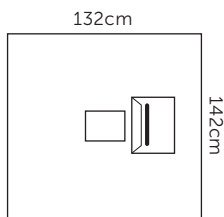
OPHTHALMIC PACK WITH MAYO STAND COVER



Code	Description	Packaging
88706	Ophthalmic Pack with Mayo Stand Cover	Units/Case = 6
Sterile Component Code	Non-Sterile Component Code	Contents
		1-Back Table Cover, Reinforced, 149 cm x 180 cm 1-Mayo Stand Cover, 58 cm x 137 cm 1-Ophthalmic Drape, 182 cm x 292 cm 1-Suture Bag

OPHTHALMIC DRAPES

BASIC OPHTHALMIC DRAPE, 132cm x 142cm



- Lightweight Fabric
- 12cm x 9cm Adhesive Incise Area
- Fluid Collection Pouch, with Eye Wick

Code	Description	Packaging
89304	Basic Ophthalmic Drape, Sterile	Units/Case = 40
79304	Basic Ophthalmic Drape, Non-Sterile	Units/Case = 100

All codes in **bold** indicate a sterile product.

† Reinforcements include:

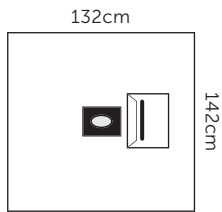
CONTROL* Plus – Maximum Absorbency

CONTROL* – Absorbent Reinforcement Fabric

Instrument Pad – Non-Slip Pad

NOTE: Please see package inserts for directions for use for each of these products.

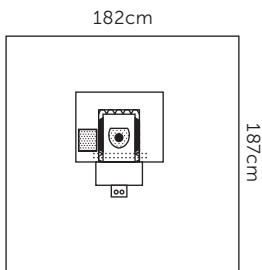
OPHTHALMIC DRAPE & PACKS



BASIC OPHTHALMIC DRAPE, OVAL FENESTRATION, 132cm x 142cm

- Applicable for both Left and Right Eye
- Eye Wick
- 8 cm Oval Fenestration, with Apertured Incise 9 x 12.7 cm
- With One Single Fluid Collection Pouch

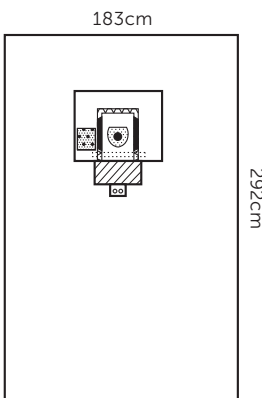
Code	Description	Packaging
89305	Basic Ophthalmic Drape, Oval Fenestration, Sterile	Units/Case = 40
79305	Basic Ophthalmic Drape, Oval Fenestration, Non-Sterile	Units/Case = 100



OCUARTS* OPHTHALMIC DRAPE, 182cm x 187cm

- 11cm x 11cm adhesive incise area with 5cm x 3cm oval fenestration
- 12cm x 15cm optional incise drape
- 270° fluid collection pouch, foam band
- Breather bar
- Tube holders

Code	Description	Packaging
89354	OCUARTS* Ophthalmic Drape, Sterile	Units/Case = 10
79354	BOCUARTS* Ophthalmic Drape, Non-Sterile	Units/Case = 25



OCUARTS* FULL BODY OPHTHALMIC DRAPE, 183cm x 292cm

- 11cm x 11cm Adhesive Incise Area
- 5cm x 3cm Oval Fenestration
- 12cm x 15cm Optional Incise Drape
- 270° Fluid Collection Pouch, Foam Band
- Breather Bar
- Tube Holders

Code	Description	Packaging
89356	OCUARTS* Full Body Ophthalmic Drape, Sterile	Units/Case = 10
79356	OCUARTS* Full Body Ophthalmic Drape, Non-Sterile	Units/Case = 20

All codes in **bold** indicate a sterile product.

† Reinforcements include:

CONTROL* Plus – Maximum Absorbency

CONTROL* – Absorbent Reinforcement Fabric

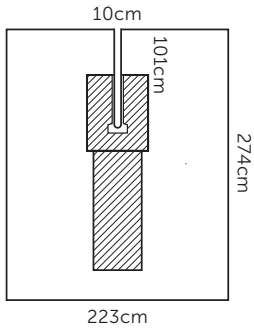
Instrument Pad – Non-Slip Pad

NOTE: Please see package inserts for directions for use for each of these products.

ORTHOPAEDIC DRAPES & PACKS

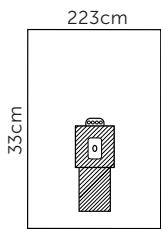
ORTHOPAEDIC PACKS

ORTHO PACK I – MAJOR



Code	Description	Packaging
88411	Ortho Pack I, Major	Items/Case = 5
Sterile Component Code	Non-Sterile Component Code	Contents
42217	42218NS	1-Back Table Cover, 111cm x 228cm.
89601	79607	1-Mayo Stand Cover, Reinforced, 58cm x 137cm.
44674	44665NS	2-AERO CHROME* Gowns with Towel, XL
	79365	1-Ortho U-Drape, 223cm X 275cm.
89381	79360	1-Ortho Bar Drape, 254cm X 152cm.
89331	79330	1-Impervious Split Drape, 152cm X 177cm.

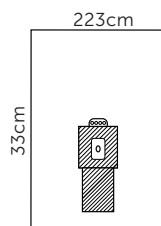
ORTHO PACK III, LOWER EXTREMITY



89276/13228

Code	Description	Packaging
88431	Ortho Pack III, Lower Extremity	Units/Case = 5
Sterile Component Code	Non-Sterile Component Code	Contents
42217	42218NS	1-Back Table Cover, 44in. x 90in.
89601	79607	1-Mayo Stand Cover, Reinforced, 23in. x 54in.
44678	44668NS	1-AERO CHROME* Specialty Gown with Towel, XL
89276	13228NS	1-Lower Extremity Drape, 88in. x 131in.
89331	79330	1-Impervious Split Drape, 60in. x 70in.
89821		1-Impervious Stockinette, 12in. x 48in.
		3-Drape Tape Strips

ORTHO PACK VI, LOWER EXTREMITY



89276/13228

Code	Description	Packaging
88461	Ortho Pack VI, Lower Extremity	Units/Case = 5
Sterile Component Code	Non-Sterile Component Code	Contents
42217	42218NS	1-Back Table Cover, 44in. x 90in.
89601	79607	1-Mayo Stand Cover, Reinforced, 23in. x 54in.
95111	39713NS	1-ULTRA Surgical Gown with Towel/Overwrap, Large
89276	13228NS	1-Lower Extremity Drape, 88in. x 131in.
89121	79120	1-Large Drape, 60in. x 76in.
89331	79330	1-Impervious Split Drape, 60in. x 70in.
89701	79720	1-Absorbent Towel, 15in. x 22in.
		1-Suture Bag

All codes in **bold** indicate a sterile product.

† Reinforcements include:

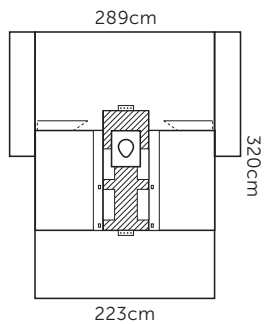
CONTROL* Plus – Maximum Absorbency

CONTROL* – Absorbent Reinforcement Fabric

Instrument Pad – Non-Slip Pad

NOTE: Please see package inserts for directions for use for each of these products.

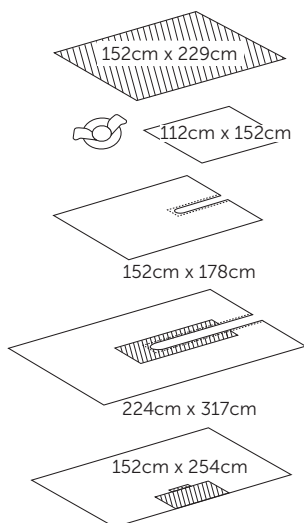
ORTHOPAEDIC DRAPES & PACKS



89345/79345

ORTHOARTS* HIP PACK WITH POCKETS

Code	Description	Packaging
88452	ORTHOARTS* Hip Pack with Fabric Pouches	Items/Case = 3
Sterile Component Code	Non-Sterile Component Code	Contents
42306	42307NS	1-Heavy-Duty Back Table Cover, 152cm X 228cm.
89601	79607	1-Mayo Stand Cover, Reinforced, 58cm X 137cm.
95111	39713NS	1-ULTRA Surgical Gown with Towel/Overwrap, Large
44674	44668NS	2-AERO CHROME* Gowns with Towel, XL
89345	79345	1-ORTHOARTS* Hip Drape with Fabric Pouches
89333	79333	1-Impervious Split Drape, 152cm X 205cm.
89121	79120	1-Large Drape, 152cm X 193cm.
89821		1-Impervious Stockinette, 30cm X 121cm. 1-Yankauer Suction Tip 1-10ft. Suction Tubing 1-Suture Bag



HIP PACK IV

Code	Description	Packaging
77765	Hip Pack IV	Units/Case = 4
Sterile Component Code	Non-Sterile Component Code	Contents
		1-Back Table Cover, Reinforced, 152 cm x 229 cm
		1-Impervious Stretchable Stockinette, Large 25 cm x 121 cm
		1-Half Drape 112 cm x 152 cm
		1-Impervious Split Drape 152 cm x 178 cm
		1-Ortho U-Drape 224 cm x 317 cm
		1-Ortho Bar Drape 152 cm x 254 cm

All codes in **bold** indicate a sterile product.

† Reinforcements include:

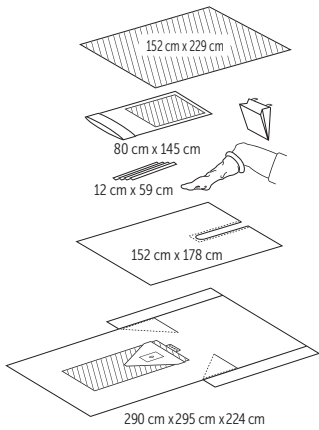
CONTROL* Plus – Maximum Absorbency

CONTROL* – Absorbent Reinforcement Fabric

Instrument Pad – Non-Slip Pad

NOTE: Please see package inserts for directions for use for each of these products.

ORTHOPAEDIC DRAPES & PACKS



ORTHOARTS* ARTHROSCOPY PACK II

Code	Description	Packaging
88213	ORTHOARTS* Arthroscopy Pack II	Units/Case = 4
Sterile Component Code	Non-Sterile Component Code	Contents
42224	42451	1-Back Table Cover, Reinforced 152cm x 229 cm
89603	79603	1-Mayo Stand Cover 80cm x 145 cm 1-Suture Bag 4-Tape Strips 12cm x 59 cm
89821		1-Impervious Stockinette, Large 30cm x 122 cm
89331	79330	1-Impervious Split Drape 152cm x 178 cm
89267	79267	1-ORTHOARTS* Knee Arthroscopy Drape 290cm x 295cm x 224 cm

All codes in **bold** indicate a sterile product.

† Reinforcements include:

CONTROL* Plus – Maximum Absorbency

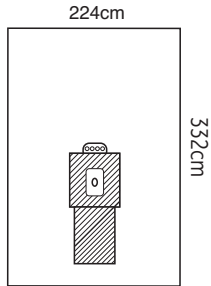
CONTROL* – Absorbent Reinforcement Fabric

Instrument Pad – Non-Slip Pad

NOTE: Please see package inserts for directions for use for each of these products.

ORTHOAEDIC DRAPES & PACKS

EXTREMITY DRAPES

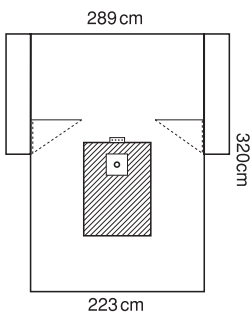


LOWER EXTREMITY DRAPE, 223cm x 332cm

- CONTROL* Plus Fabric Reinforcement
- 6cm Conformable Circular Fenestration
- Tube Holders

Code	Description	Packaging
------	-------------	-----------

89276	Lower Extremity Drape, Sterile	Units/Case = 14
--------------	--------------------------------	-----------------



ORTHOARTS* LOWER EXTREMITY DRAPE, 289cm x 223cm x 320cm

- Armboard Covers
- 6cm Conformable Circular Fenestration
- Heavy-Duty Fabric
- CONTROL* Plus Fabric Reinforcement
- Tube Holders

Code	Description	Packaging
------	-------------	-----------

89278	ORTHOARTS* Lower Extremity Drape, Sterile	Units/Case = 7
13233	ORTHOARTS* Lower Extremity Drape, Non-Sterile	Units/Case = 84

All codes in **bold** indicate a sterile product.

† Reinforcements include:

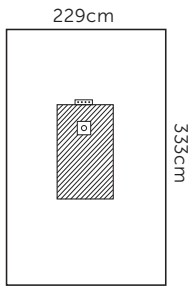
CONTROL* Plus – Maximum Absorbency

CONTROL* – Absorbent Reinforcement Fabric

Instrument Pad – Non-Slip Pad

NOTE: Please see package inserts for directions for use for each of these products.

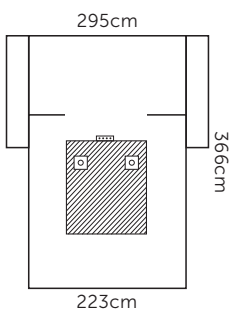
ORTHOPAEDIC DRAPES & PACKS



UNIVERSAL EXTREMITY DRAPE, 229cm x 333cm

- CONTROL* Plus Fabric Reinforcement

Code	Description	Packaging
89279	Universal Extremity Drape, Sterile	Units/Case = 14
79279	Universal Extremity Drape, Non-Sterile	Units/Case = 150



BILATERAL LIMB DRAPE WITH ARMBEARD COVERS, 295cm x 223cm x 366cm

- CONTROL* Plus Fabric Reinforcement
- Two 6cm Conformable Circular Fenestrations
- Tube Holders
- Armboard Covers

Code	Description	Packaging
89380	Bilateral Limb Drape with Armboard Covers, Sterile	Units/Case = 12

All codes in **bold** indicate a sterile product.

† Reinforcements include:

CONTROL* Plus – Maximum Absorbency

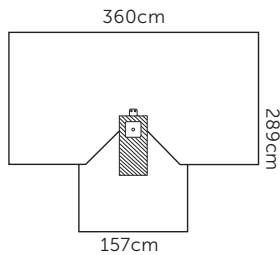
CONTROL* – Absorbent Reinforcement Fabric

Instrument Pad – Non-Slip Pad

NOTE: Please see package inserts for directions for use for each of these products.

ORTHOPAEDIC DRAPES & PACKS

HAND DRAPES



HAND DRAPE, 289cm x 360cm

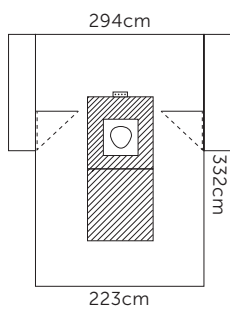
- 157cm x 147cm Hand Table Cover
- 3cm Conformable Circular Fenestration
- CONTROL* Plus Fabric Reinforcement
- Tube Holders

Code	Description	Packaging
------	-------------	-----------

77450	Hand Drape, Sterile	Units/Case = 11
--------------	---------------------	-----------------

13227	Hand Drape, Non-Sterile	Units/Case = 108
-------	-------------------------	------------------

HIP DRAPES



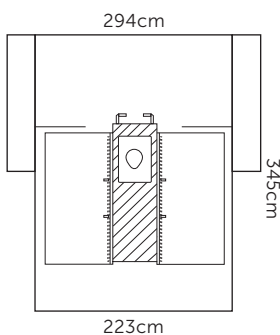
HIP DRAPE, 294cm x 223cm x 332cm

- Armboard Covers
- 21cm x 21cm Conformable Teardrop Fenestration
- CONTROL* Plus Fabric Reinforcement
- Tube Holders

Code	Description	Packaging
------	-------------	-----------

89341	Hip Drape, Sterile	Units/Case = 9
--------------	--------------------	----------------

79341	Hip Drape, Non-Sterile	Units/Case = 12
-------	------------------------	-----------------



HIP DRAPE WITH CLEAR LEG POCKETS, 294cm x 223cm x 345cm

- Clear Leg Pockets
- Armboard Covers
- 21cm x 17cm Conformable Teardrop Fenestration
- CONTROL* Plus Fabric Reinforcement
- Hook and Loop Tube and Line Control

Code	Description	Packaging
------	-------------	-----------

89349	Hip Drape with Clear Leg Pockets, Sterile	Units/Case = 9
--------------	---	----------------

79349	Hip Drape with Clear Leg Pockets, Non-Sterile	Units/Case = 10
-------	---	-----------------

All codes in **bold** indicate a sterile product.

† Reinforcements include:

CONTROL* Plus – Maximum Absorbency

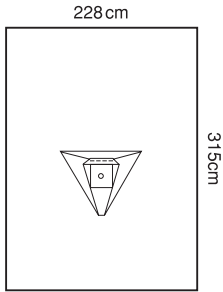
CONTROL* – Absorbent Reinforcement Fabric

Instrument Pad – Non-Slip Pad

NOTE: Please see package inserts for directions for use for each of these products.

ORTHOPAEDIC DRAPES & PACKS

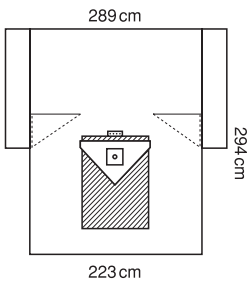
KNEE ARTHROSCOPY DRAPES



KNEE ARTHROSCOPY DRAPE, 228cm x 315cm

- Fluid Collection Pouch with Suction Port
- 6cm Conformable Circular Fenestration
- Tube Holders

Code	Description	Packaging
89265	Knee Arthroscopy Drape, Sterile	Units/Case = 10
79265	Knee Arthroscopy Drape, Non-Sterile	Units/Case = 150



ORTHOARTS* KNEE ARTHROSCOPY DRAPE, 289cm x 223cm x 294cm

- Armboard Covers
- Fluid Collection Pouch with Reflux Shields and Suction Port
- Heavy-Duty Fabric
- CONTROL* Plus Fabric Reinforcement
- 6cm Conformable Circular Fenestration
- Tube Holders

Code	Description	Packaging
89267	ORTHOARTS* Knee Arthroscopy Drape, Sterile	Units/Case = 7
79267	ORTHOARTS* Knee Arthroscopy Drape, Non-Sterile	Units/Case = 7

All codes in **bold** indicate a sterile product.

† Reinforcements include:

CONTROL* Plus – Maximum Absorbency

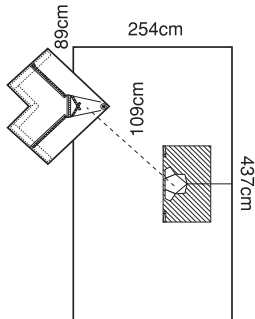
CONTROL* – Absorbent Reinforcement Fabric

Instrument Pad – Non-Slip Pad

NOTE: Please see package inserts for directions for use for each of these products.

ORTHOPAEDIC DRAPES & PACKS

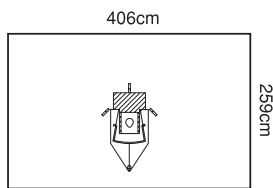
SHOULDER DRAPES



BEACH CHAIR SHOULDER DRAPE WITH ATTACHABLE FLUID COLLECTION POUCH, 437cm x 254cm

- Attachable Fluid Collection Pouch with Suction Port, 89cm x 109cm
- CONTROL* Plus Fabric Reinforcement
- Hook and Loop Tube and Line Control
- Pouch Attachment Zones

Code	Description	Packaging
89066	Beach Chair Shoulder Drape with Attachable Fluid Collection Pouch, Sterile	Units/Case = 6
79049	Beach Chair Shoulder Drape without Attachable Fluid Collection Pouch, Non-Sterile	Units/Case = 11
79061	Attachable Fluid Collection Pouch, Non-Sterile	Units/Case = 44



BEACH CHAIR SHOULDER ARTHROSCOPY DRAPE II, 406cm x 259cm

- Attached Fluid Collection
- Hook and Loop Tube and Line Control
- 6cm Conformable Tear Drop Fenestration
- Instrument Pad Fabric Reinforcement

Code	Description	Packaging
89070	Beach Chair Shoulder Arthroscopy Drape, Sterile	Units/Case = 10
79070	Beach Chair Shoulder Arthroscopy Drape, Non-Sterile	Units/Case = 12

All codes in **bold** indicate a sterile product.

† Reinforcements include:

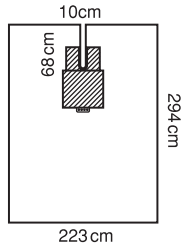
CONTROL* Plus – Maximum Absorbency

CONTROL* – Absorbent Reinforcement Fabric

Instrument Pad – Non-Slip Pad

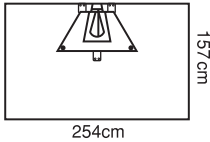
NOTE: Please see package inserts for directions for use for each of these products.

ORTHOPAEDIC DRAPES & PACKS

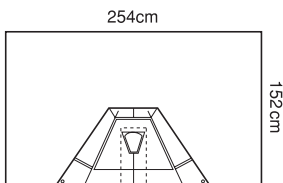


2-PIECE SHOULDER ARTHROSCOPY DRAPE PACK

- Body Split Drape, 223cm x 294cm
- 10cm x 68cm Split
- CONTROL* Plus Fabric Reinforcement
- Tube Holders
- Shoulder Arthroscopy Drape, 254cm x 157cm
- Fluid Collection Pouch with Suction Ports
- Tube Holders



Code	Description	Packaging
89490	2-Piece Shoulder Arthroscopy Drape Pack, Sterile	Units/Case = 12
79490	2-Piece Shoulder Arthroscopy Drape Pack, Non-Sterile	Units/Case = 12



ORTHOARTS* SHOULDER ARTHROSCOPY DRAPE, 254cm x 152cm

- Fluid Collection Pouch
- Heavy-Duty Fabric

Code	Description	Packaging
89492	ORTHOARTS* Shoulder Arthroscopy Drape, Sterile	Units/Case = 12
79492	ORTHOARTS* Shoulder Arthroscopy Drape, Non-Sterile	Units/Case = 15

All codes in **bold** indicate a sterile product.

† Reinforcements include:

CONTROL* Plus – Maximum Absorbency

CONTROL* – Absorbent Reinforcement Fabric

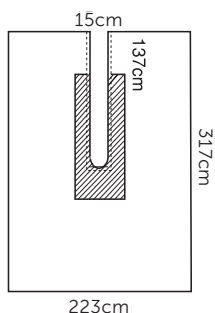
Instrument Pad – Non-Slip Pad

NOTE: Please see package inserts for directions for use for each of these products.

ORTHOPAEDIC DRAPES & PACKS

U & BAR DRAPES

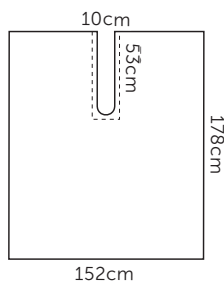
LARGE U-DRAPE, 223cm x 317cm



- 15cm x 137cm Split
- CONTROL* Plus Fabric Reinforcement
- Tube Holders
- Positioning Tape

Code	Description	Packaging
89311	Large Ortho U-Drape, Sterile	Units/Case = 11
79363	Large Ortho U-Drape, Non-Sterile	Units/Case = 15

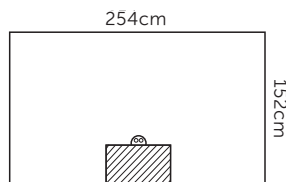
SPLIT DRAPE, 152cm x 178cm



- Polyethylene Material
- 10cm x 53cm Split

Code	Description	Packaging
89331	Split Drape, Sterile	Units/Case = 42
79330	Split Drape, Non-Sterile	Units/Case = 115

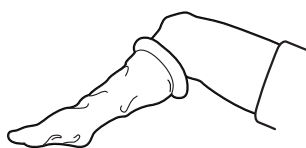
ORTHO BAR DRAPE, 254cm x 152cm



- CONTROL* Plus Fabric Reinforcement
- Tube Holders

Code	Description	Packaging
89381	Ortho Bar Drape, Sterile	Units/Case = 18
79360	Ortho Bar Drape, Non-Sterile	Units/Case = 28

STOCKINETTES



Code	Description	Packaging
89811	Stockinette, Sterile, Medium, 23cm x 112cm	Units/Case = 36
79505	Stockinette, Non-Sterile, Medium, 23cm x 112cm	Units/Case = 75
89821	Stockinette, Sterile, Large, 30cm x 122cm	Units/Case = 25
79515	Stockinette, Non-Sterile, Large, 30cm x 122cm	Units/Case = 50

All codes in **bold** indicate a sterile product.

† Reinforcements include:

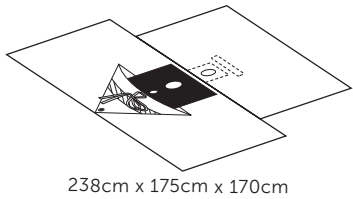
CONTROL* Plus – Maximum Absorbency

CONTROL* – Absorbent Reinforcement Fabric

Instrument Pad – Non-Slip Pad

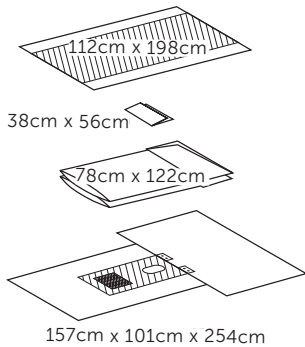
NOTE: Please see package inserts for directions for use for each of these products.

UROLOGY DRAPES & PACKS



T.U.R. PACK

Code	Description	Packaging
77885	T.U.R. Pack Non-Sterile Component Code	Units/Case = 12
	Contents	
	1-Back Table Cover, Zone-Reinforced, 152cm x 191cm	
	1-Absorbent Towel, 38cm x 56cm	
76885	1-T.U.R. Drape, 289cm x 175cm x 173cm: <ul style="list-style-type: none"> • Attached Leggings • Fluid Collection Pouch with Screen, Suction Port and Tie • Finger Cot 	



CYSTOSCOPY PACK IV

Code	Description	Packaging
88618	Cystoscopy Pack IV Sterile Component Code	Units/Case = 12
	Non-Sterile Component Code	
	Contents	
	1-Back Table Cover, Zone-Reinforced, 112cm x 198cm	
	1-Absorbent Towel, 38cm x 56cm	
89408	79408	2-Leggings, with 15cm Cuff, 78cm x 122cm
89548	79548	1-Cystoscopy "T" Drape with CONTROL* Plus Reinforcement, 157cm x 101cm x 254cm

All codes in **bold** indicate a sterile product.

† Reinforcements include:

CONTROL* Plus – Maximum Absorbency

CONTROL* – Absorbent Reinforcement Fabric

Instrument Pad – Non-Slip Pad

NOTE: Please see package inserts for directions for use for each of these products.

INDEX

Code	Page	69253	13	79335	24	88431	38	89413	39
13227	47	Code	Page	79343	22	88452	43	89414	39
13233	45	72978	8	79341	47	88461	38	89431	16
13296	10	72988	8	79349	47	88521	37	89452	13
31439	11	74911	7	79351	15	88551	37	89453	13
31455	11	76263	36	79354	41	88618	53	89454	13
35677	40	76356	13	79356	41	88706	40	89471	9
39713	13	76358	17	79360	52	88716	14	89472	11
41928	5	76377	32	79363	51	88731	12	89490	50
41929	5	76885	48	79368	9	88763	29	89492	50
41930	5	76888	33	Code	Page	88769	30	89501	33
41931	5	77350	13	79408	38	88770	30	89525	34
42217	17	77450	47	79412	30	88831	30	89528	35
42218	17	77592	17	79413	33	Code	Page	Code	Page
42222	26	77748	12	79414	39	89021	18	89548	48
42231	17	77765	43	79430	16	89023	22	89583	9
42306	17	77885	53	79452	13	89053	18	89601	17
42307	17	77888	37	79453	13	89062	33	89602	17
42309	13	78940	8	79472	11	89066	49	89611	27
42310	13	78945	8	79482	17	89070	49	89603	17
42428	26	78950	8	79490	50	89101	33	89636	25
42366	17	78955	8	79492	50	89111	22	89701	18
42480	17	79027	30	79501	33	89121	22	89705	10
44663	30	79049	49	79505	52	89193	33	89709	10
44665	13	79053	18	79515	52	89204	38	89711	10
44673	30	79061	49	79525	34	89206	28	89749	10
44674	13	79070	49	79528	35	89207	28	89791	19
44678	38	79075	33	79548	48	89208	28	89811	52
44688	4	79095	32	79551	33	89209	28	89821	52
44689	4	79096	27	79593	33	89221	26	89945	18
44690	4	79097	27	79601	20	89223	26	90012	8
44691	4	79101	33	79602	17	89241	27	90042	8
44692	4	79106	22	79603	17	89265	48	95101	7
44693	4	79112	22	79607	17	89267	48	95111	7
44694	4	79120	13	79613	27	89276	45	95121	7
44695	4	79122	22	79705	10	89278	45	95201	6
44696	4	79132	23	79709	10	89279	46	95211	6
44697	4	79204	38	79720	30	89282	27	95221	6
44698	4	79206	28	79725	18	89304	40	95231	6
44699	4	79207	28	79731	19	89305	41	95511	6
44706	4	79208	28	79749	10	89311	51	95521	6
44707	4	79209	28	79810	30	89331	51		
46870	7	79214	26	79828	23	89341	47		
46871	7	79215	26	79945	18	89349	47		
46872	7	79240	24	88111	20	89352	15		
46873	7	79265	48	88121	20	89354	41		
46924	7	79267	48	88213	44	89356	41		
46925	7	79279	46	88222	36	89358	15		
46926	7	79282	27	88223	14	89368	9		
47256	7	79304	40	88231	26	89380	46		
66350	13	79305	41	88334	30	89381	52		
66510	13	79330	51	88411	42	89408	30		



Infection Prevention Product Solutions
Halyard* Education Foundation
Tools & Best Practice
Commitment to Excellence and Sustainability
Experienced Customer Support
Knowledgeable Sales Force
Innovation & Technology



O&M Halyard Singapore Pte Ltd

For more information, contact your
Halyard Account Manager or email us at:
CustomerService_SG@hyh.com

www.halyardhealth.com



Halyard Health makes no representation that its products described in this catalogue will provide complete protection from exposure to contaminants, fluids or micro-organisms or will eliminate the risk of contracting infectious diseases.

*Registered Trademark or Trademark of O&M Halyard or its affiliates. ©2018 O&M Halyard International. All Rights Reserved.
WHP082018